

# Frio County Economic Profile



Comprehensive Economic Development Strategy  
October 2012

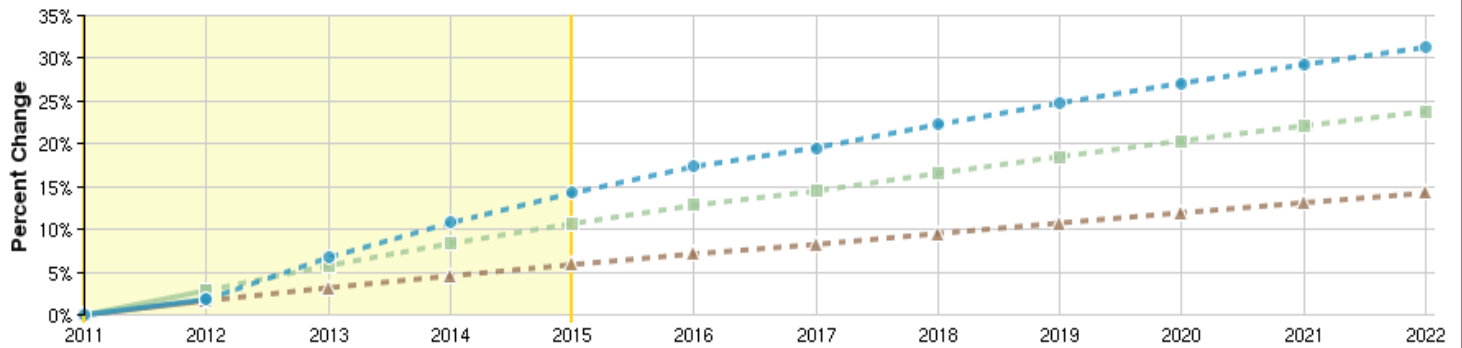
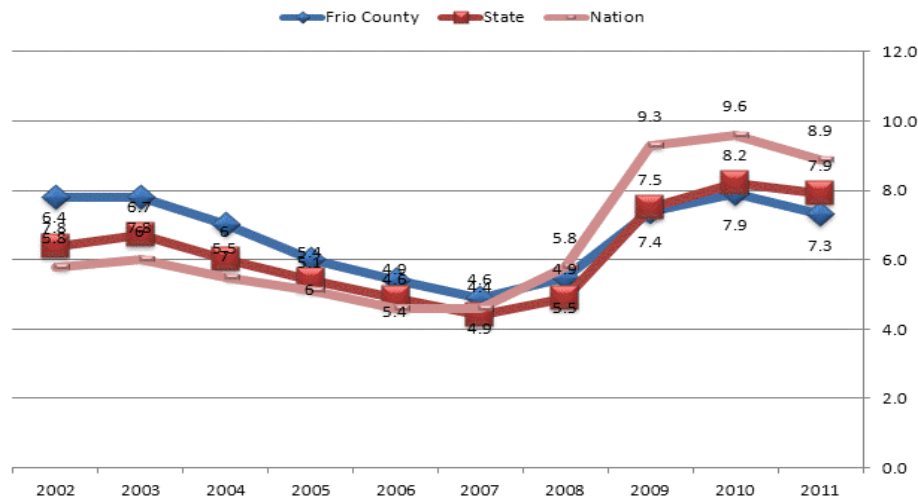
## Labor Force Data

The Frio County unemployment rate averaged to 7.3 percent in 2011, down from 7.9 percent averaged in 2010.

Comparing Frio County to the state and nation, the Texas unadjusted (actual) unemployment rate averaged 7.9 percent in 2011, while the nation's unadjusted (actual) unemployment rate was 8.9 percent in 2011.

*Source: Department of Labor*

### Regional Trends



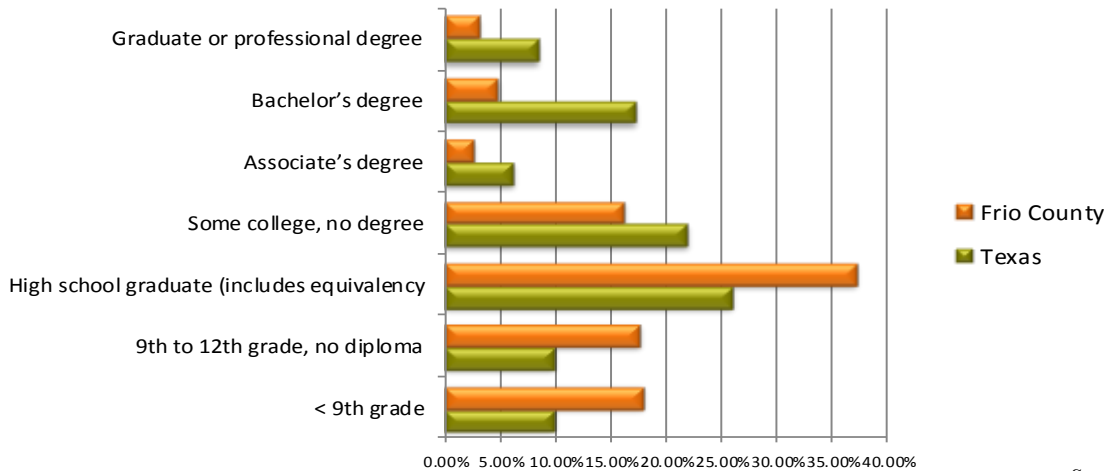
Region	2011 Jobs	2015 Jobs	% Change
Frio	7,155	8,174	14.2%
State	14,681,471	16,247,350	10.7%
Nation	176,769,254	187,155,067	5.9%

*Source: EMSI, Economic Modeling*

# Population, Educational Attainment, and Industry Data

	Total Population	% Population 20-54	Median Age	Households	Median Household Income	Per Capita Income
US	303,965,272	48.7%	36.9	76,254,318	\$51,914	\$27,334
Texas	24,311,891	49.4%	33.4	8,539,206	\$49,646	\$24,870
Frio County	16,956	49.8%	31.7	4,748	\$35,940	\$15,036

Source: 2010 US Census



Source: 2010 US Census

Industry	2012 Jobs	Avg. Earnings (2012)
Agriculture, Forestry, Fishing and Hunting	1,211	\$23,023
Mining, Quarrying, and Oil and Gas Extraction	343	\$59,051
Utilities	73	\$113,216
Construction	296	\$23,009
Manufacturing	91	\$21,955
Wholesale Trade	238	\$55,117
Retail Trade	626	\$23,939
Transportation and Warehousing	161	\$50,553
Information	43	\$53,554
Finance and Insurance	234	\$39,999
Real Estate and Rental and Leasing	92	\$12,838

Industry	2012 Jobs	Avg. Earnings (2012)
Professional, Scientific, and Technical Services	202	\$65,399
Management of Companies and Enterprises	0	\$0
Administrative and Support and Waste Management and Remediation Services	758	\$23,735
Educational Services (Private)	3	\$10,039
Health Care and Social Assistance	805	\$25,700
Arts, Entertainment, and Recreation	42	\$12,567
Accommodation and Food Services	374	\$14,873
Other Services (except Public Administration)	254	\$17,549
Government	1,437	\$44,970
Unclassified Industry	1	\$21,688

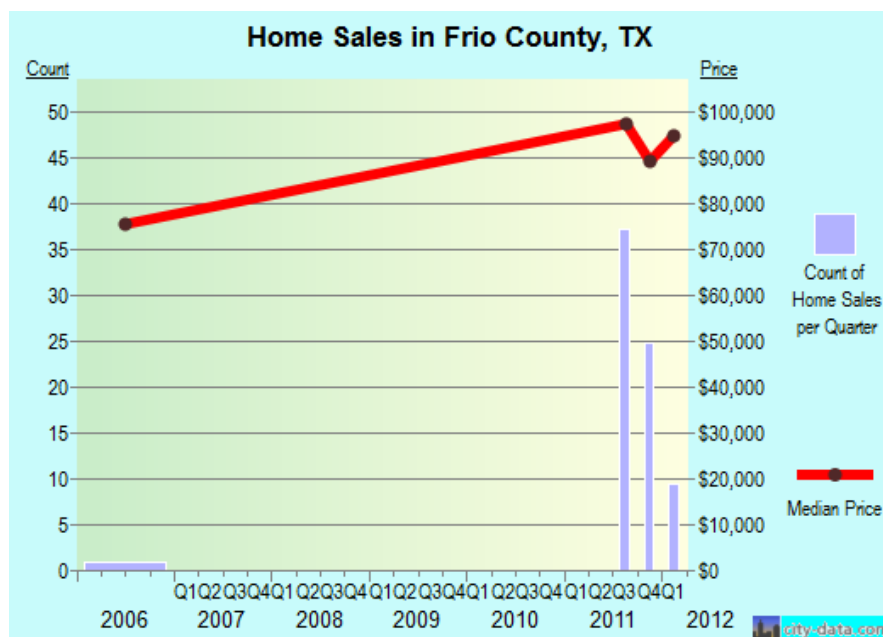
Source: EMSI, Economic Modeling

## Economic Strengths and Priorities

- Frio County forms a portion of the northern extent of the Eagle Ford Shale oil window. The Eagle Ford Shale in Frio County is prospective more so for oil rather than natural gas.
- Due to the importance of IH-35 to Eagle Ford Shale activity, Frio County has seen dramatic impacts from the natural gas boom in South Texas as this is a major transportation artery through the county.
- Escondido's Spohn Ranch 1H well is the highest producing natural gas well to date in the Eagle Ford Shale, according to a company press release.
- The emergence of the Eagle Ford Shale has increased demand for rental property, mainly multi-family units, and hotel capacity substantially.
  - Hotel capacity in Pearsall has increased from 165 (2010) to 226 (2012) rooms. Hotel receipts have increased 283% during the timeframe (Q1 2010 to Q1 2012 comparison).
  - Hotel capacity in Dilley has increased from 100 (2010) to 112 (2012) rooms. Hotel receipts have increased 340% during the timeframe (Q1 2010 to Q1 2012 comparison).

*Source: Texas Comptroller of Public Accounts, [www.window.state.tx.us](http://www.window.state.tx.us)*

- Agricultural cash values in Frio County averaged \$73.6 million annually from 2007 to 2010. County total agricultural values in 2010 were down 1.9 percent from 2009. Major agriculture related commodities in 2010 included Vegetables, Other Beef, Watermelon, Peanuts, and Beef.
- Taxable sales in Frio County during the first quarter of 2012: \$44,869,185, up 48.5 percent from the same quarter in 2011.
- Home sales increased significantly in 2011 as a result of the Eagle Ford Shale with available housing stock diminishing quickly.



### Resources

US Department of Commerce (<http://www.bea.gov/index.htm>); TexasAhead (<http://www.texasahead.org/>); Window on State Government (<http://www.window.state.tx.us/taxinfo/sales/>); Texas Industry Profiles (<http://www.texasindustryprofiles.com/apps/cnp/index.asp>).

## Economic Development Challenges

- The Leona River flows for 85 mile from US 83 in Uvalde County through Zavala County to its confluence with the Frio River in Frio County. The Leona River in on the state's list of impaired waters for having bacteria levels that exceed water quality standards and has been identified as having a concern for nitrates.
  - Lack of affordable housing for working families and is a challenge to not only families, but existing businesses and new/expanding businesses as well.
  - Educational attainment of the population age 25+ significantly trails the state and nation:
    - 64.3% are high school graduate or higher versus 80.0% and 85.0% for Texas and the nation respectively
    - 8.1% achieved a bachelor's degree or higher versus 25.8% and 27.9% for Texas and the nation respectively
  - Managing economic development is challenging communities with the rapid emergence of the Eagle Ford Shale Play and associated impact on infrastructure, demand for housing and commercial space, and indirect retail and service industry demands.
  - Diminishing housing stock is driving up prices and leading to the emergence of RV parks and temporary housing of varied quality.
- 



Alamo Area Council of Governments  
8700 Tesoro Dr., Suite 700  
San Antonio, TX 78217-6228  
Ph: (210) 362-5200  
Fx: (210) 225-5937

**[www.aacog.com](http://www.aacog.com)**